

SEVERE WEATHER UPDATE FROM DESPP/DEMHS

JUNE 26TH – 2:45 PM

Connecticut Department of Emergency Services & Public Protection
Division of Emergency Management & Homeland Security

Governor Ned Lamont
Ronnell A. Higgins, Commissioner
Brenda M. Bergeron, Deputy Commissioner
William H. Turner III, Director

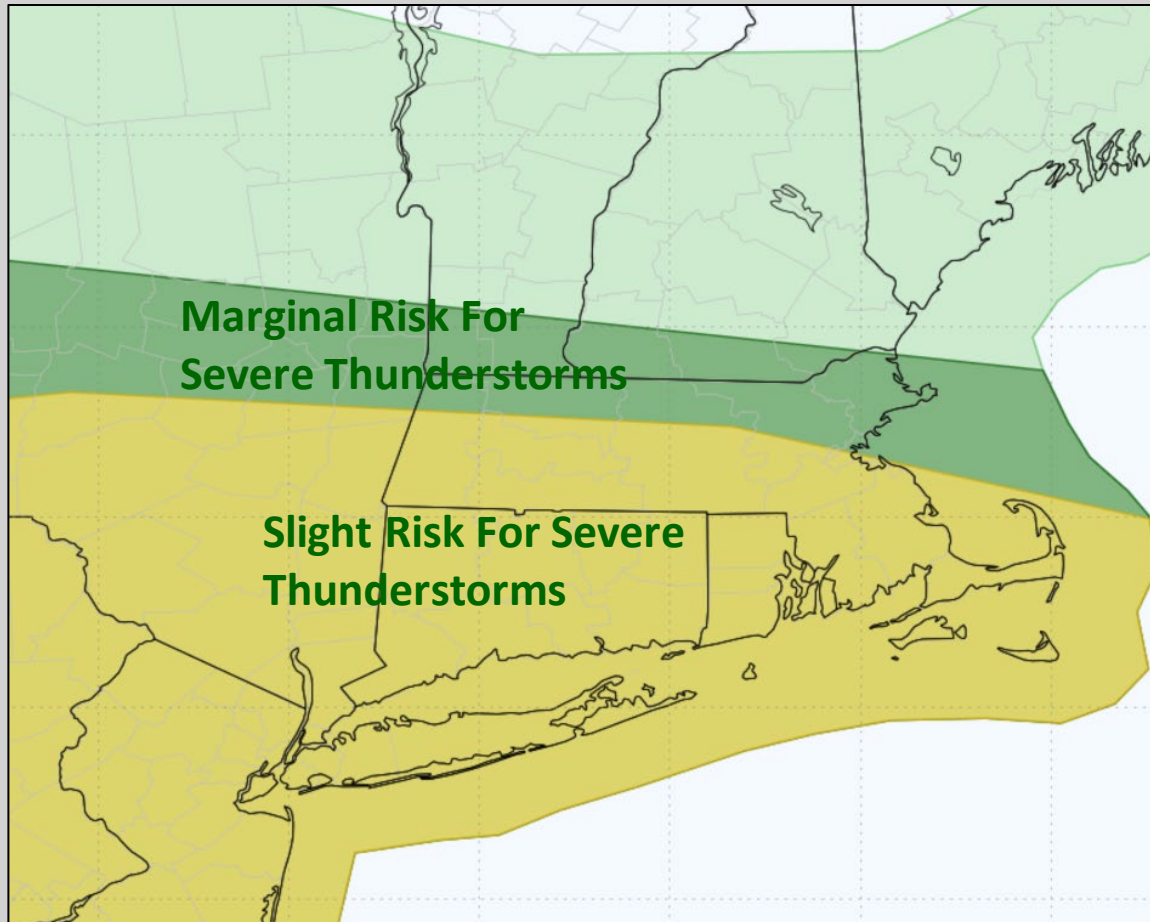
This product is a public service of the Department of Emergency Services and Public Protection (DESPP) and is intended for informational purposes only. DESPP assumes no liability for the use or distribution of this product or any actions resulting from this product.



STORM PREDICTION CENTER FORECAST



Updated SPC Forecast to Today



The Storm Prediction Center (SPC) has upgraded the risk and has now placed the entire state into the Slight Risk Category for severe thunderstorms this evening. SPC has also added a 2% tornado risk for parts of central and western CT.



Hazards Expected

PRIMARY HAZARDS

	Low	Mod	High	Sig
Strong Winds (15%)				
Large Hail (5%)				
Tornadoes (2%)				
Heavy Downpours (80%)				
Urban Flooding (60%)				
Stream Flooding (20%)				

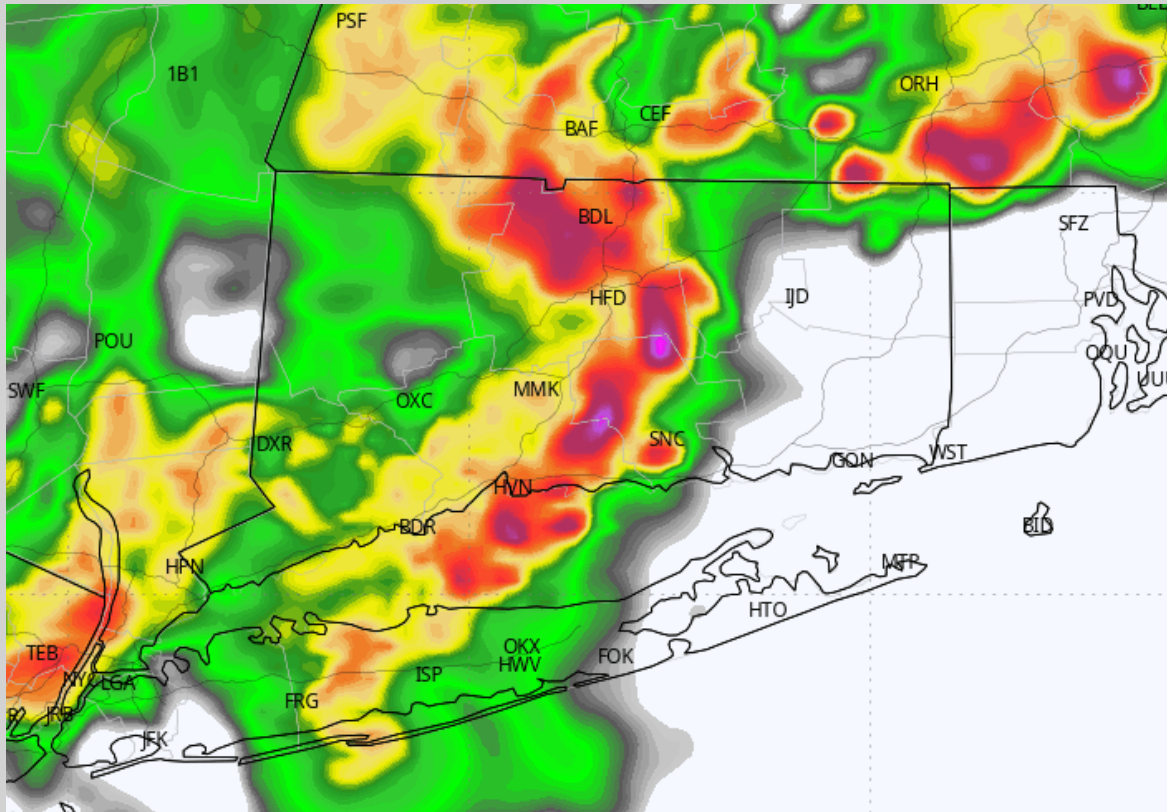
The SPC is forecasting that any thunderstorms that develop will have a 15% chance of containing strong winds, a 5% chance for large hail and a 2% chance for a tornado. Another threat is expected to result from very heavy rainfall (rainfall rates of 1" – 2"+ per hour) within the stronger thunderstorms. This very heavy rainfall may cause minor to moderate urban flooding.



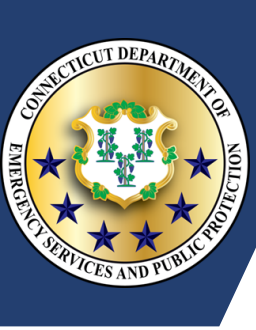
SIMULATED RADAR



HRRR Simulated Radar at 11:00 PM



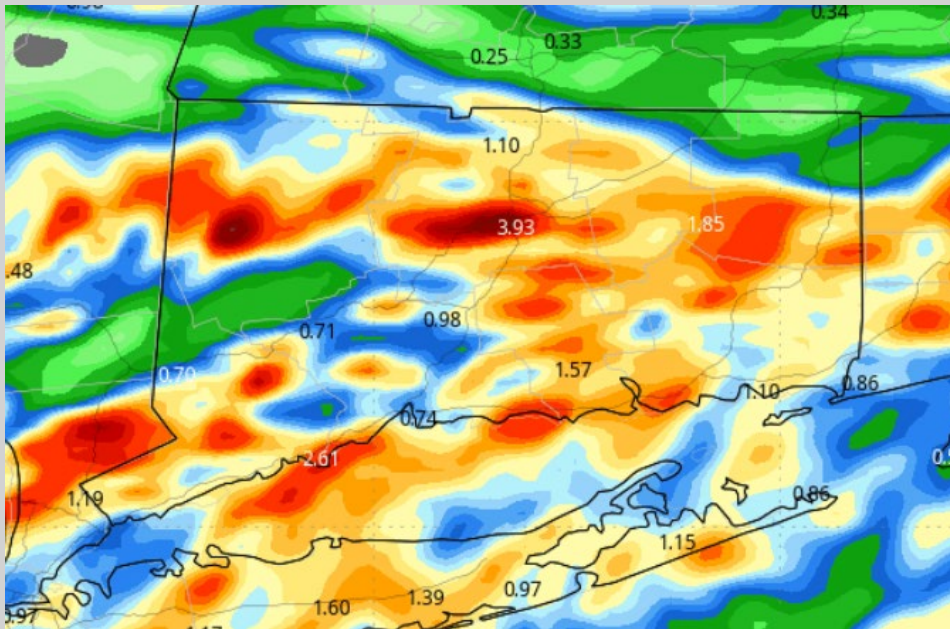
Latest model guidance is indicating isolated to scattered pop up thunderstorms will develop after 7PM. A more organized line of strong to severe storms will likely move through the state between 10PM and 12AM.



TOTAL RAINFALL



NAMHRES Rainfall Forecast



The NAMHRES model is forecasting very heavy rainfall in the path of any strong to severe thunderstorms that move across the state this evening. Rainfall rates of 1" – 2" per hour with a few isolated rates near 3" per hour may occur in thunderstorms. Total rainfall is forecast to range from 1" – 4" in the paths of strong to severe thunderstorms.



Threat Timing for All Hazards



Threat Level

Very High

High

Moderate

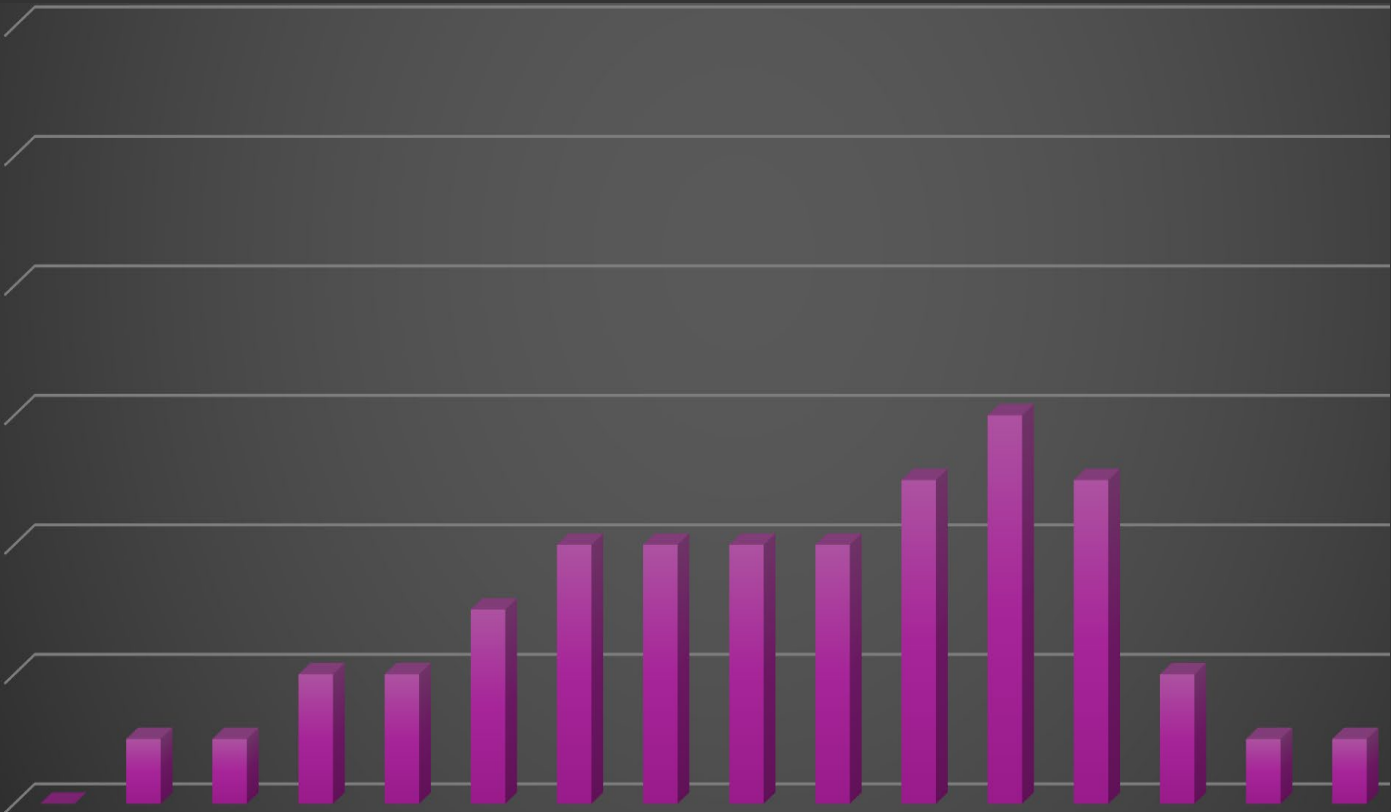
Low

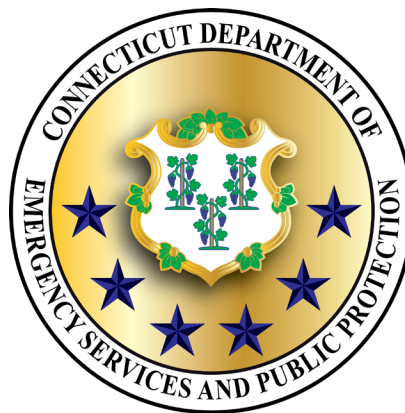
Noon 1:00 2:00 3:00 4:00 5:00 6:00 7:00 8:00 9:00 10:00 11:00 12:00 1:00 2:00 3:00

This Afternoon

This Evening

Thursday Morning





The Department of Emergency Services and Public Protection, Division of Emergency Management and Homeland Security will continue to monitor this severe weather threat. Additional updates will be sent out as warranted. Please report and significant storm damage to your regional coordinator.

Governor Ned Lamont
Ronnell A. Higgins, Commissioner
Brenda M. Bergeron, Deputy Commissioner
William H. Turner III, Director

This product is a public service of the Department of Emergency Services and Public Protection (DESPP) and is intended for informational purposes only. DESPP assumes no liability for the use or distribution of this product or any actions resulting from this product.