



Quisenberry Arcari  
ARCHITECTS, LLC



Diversified Technology  
Consultants

SPECIALISTS  
Town Hall  
&  
Community  
Center Projects

A Proposed New  
**TOWN HALL & COMMUNITY CENTER**  
Newington, Connecticut

CONCEPT DESIGN PRESENTATION

April 19th, 2017



## Town Hall Front & Rear Entrance



Newington Municipal Center | April 5, 2017





## COMMUNITY CENTER ENTRANCE



Newington Municipal Center | April 5, 2017





## CAMPUS AERIAL NORTH



Newington Municipal Center | April 5, 2017





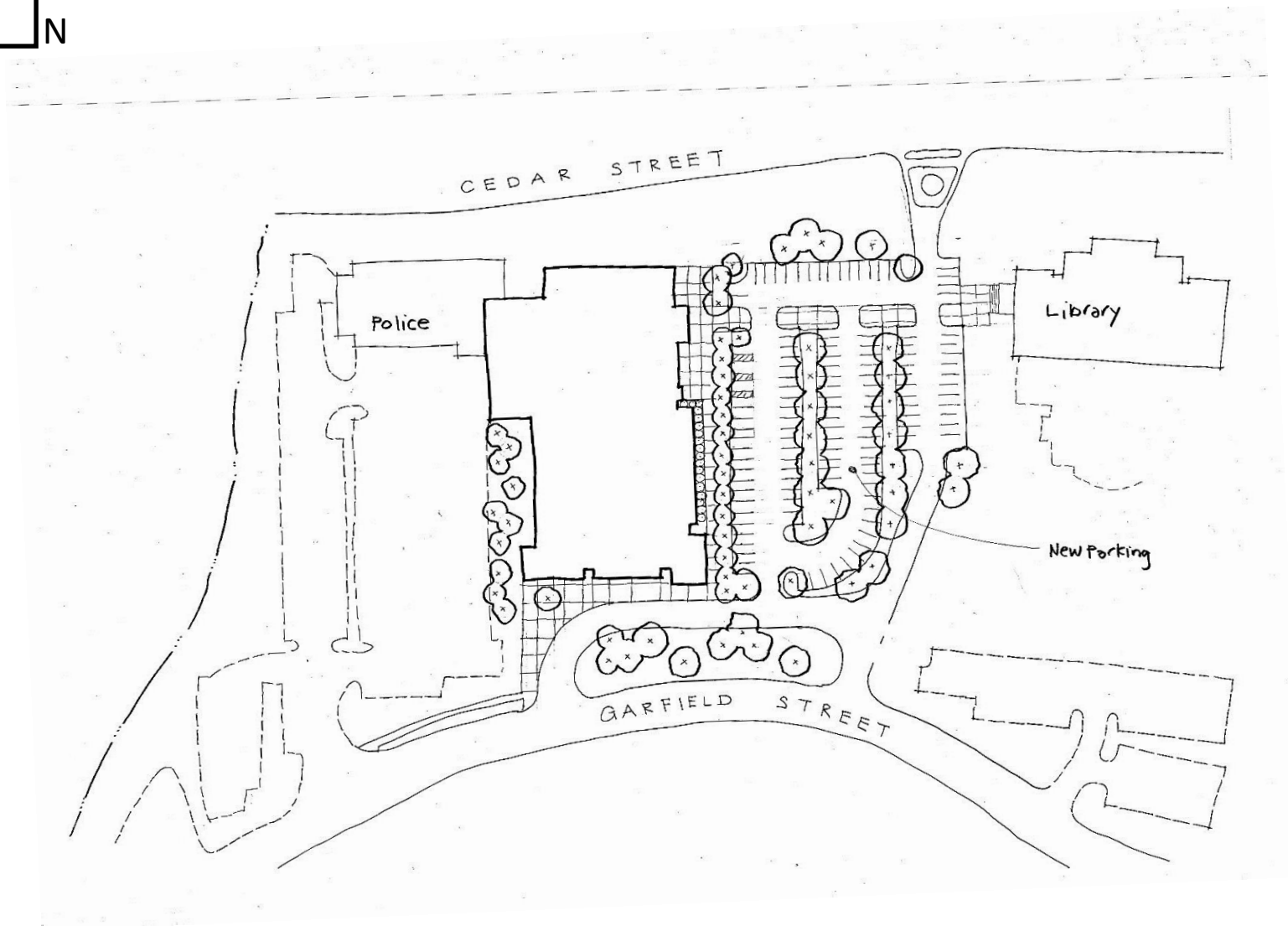
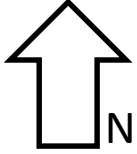
## CAMPUS AERIAL WEST

Newington Municipal Center | April 5, 2017

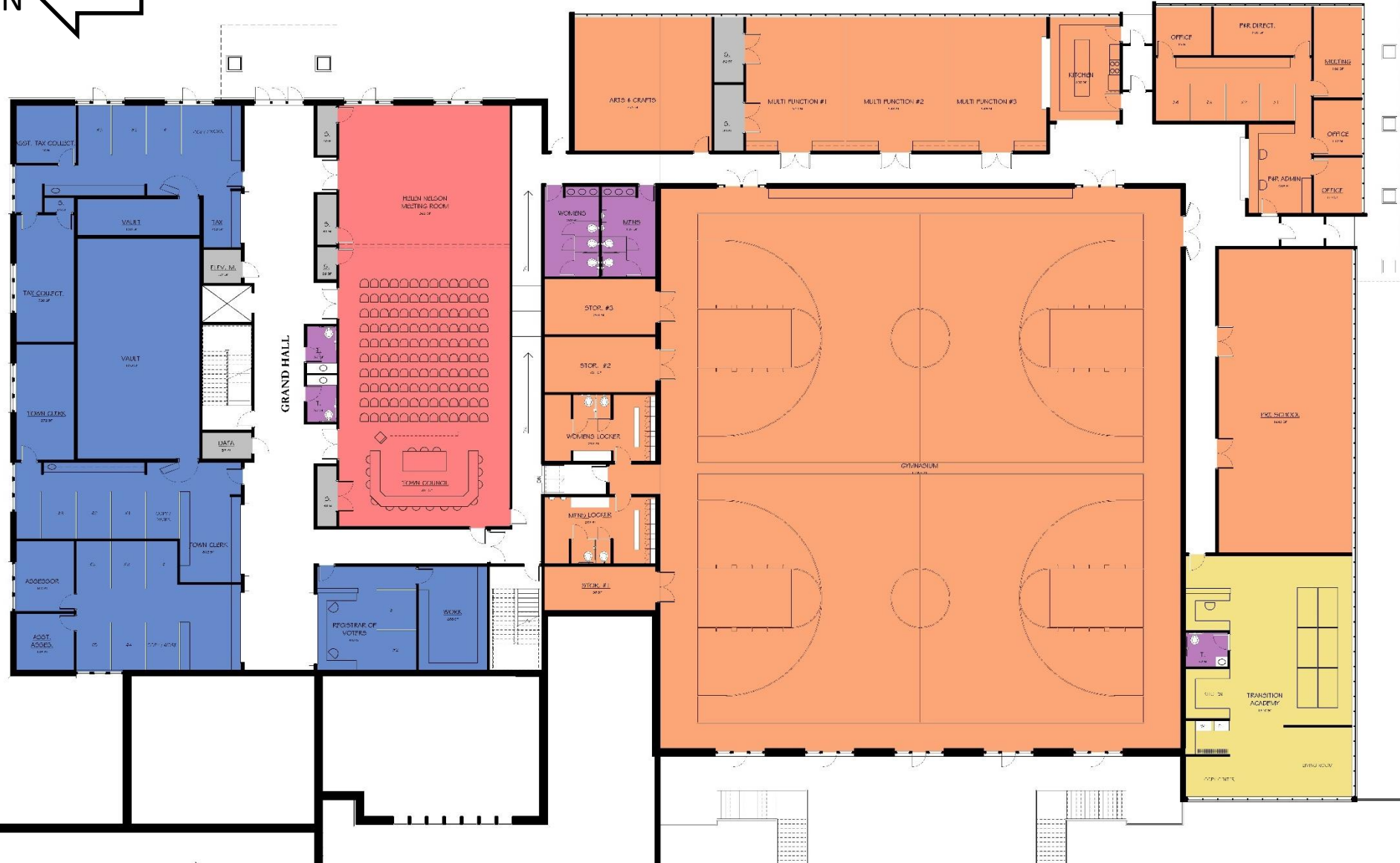
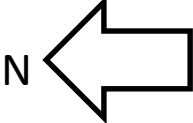


END OF PRESENTATION



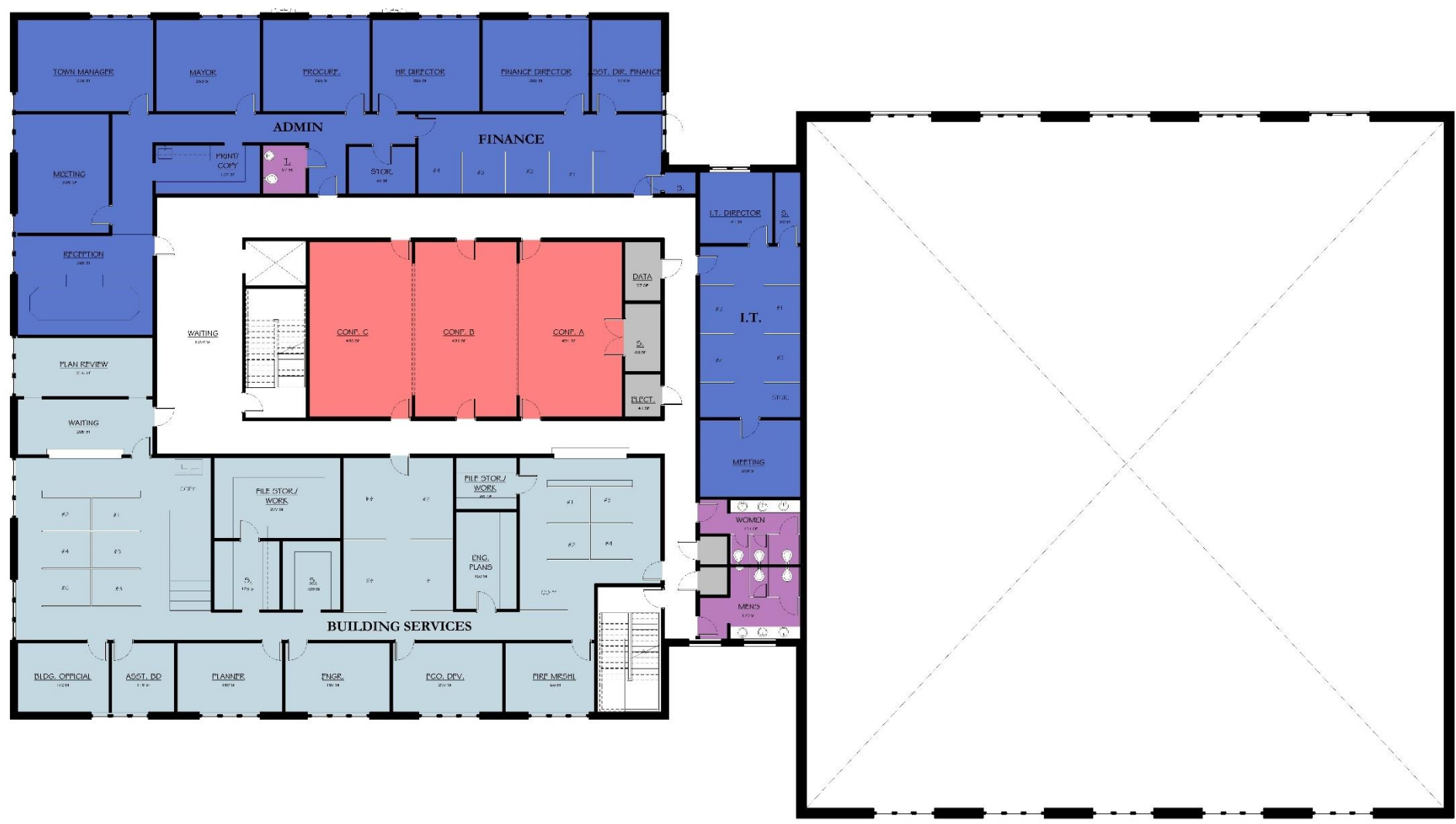
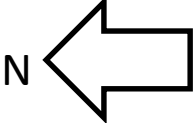


Site Plan – North / South



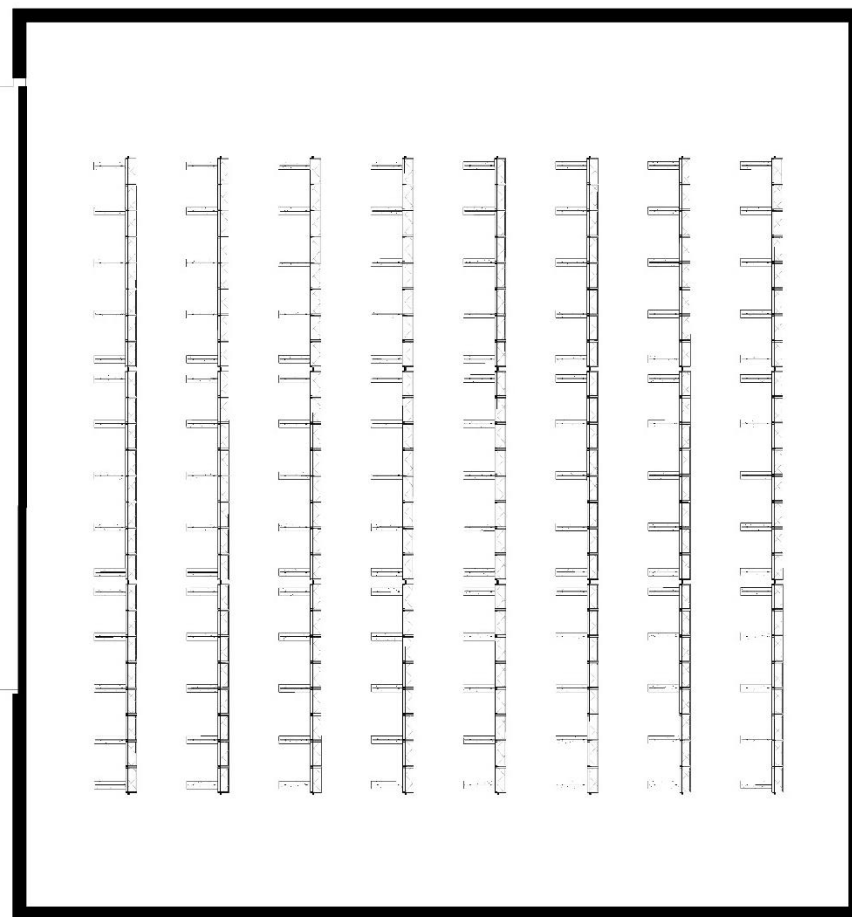
First Floor Plan N-S

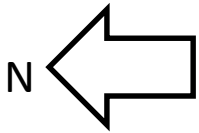




Second Floor Plan N-S







Lower Level Plan N-S

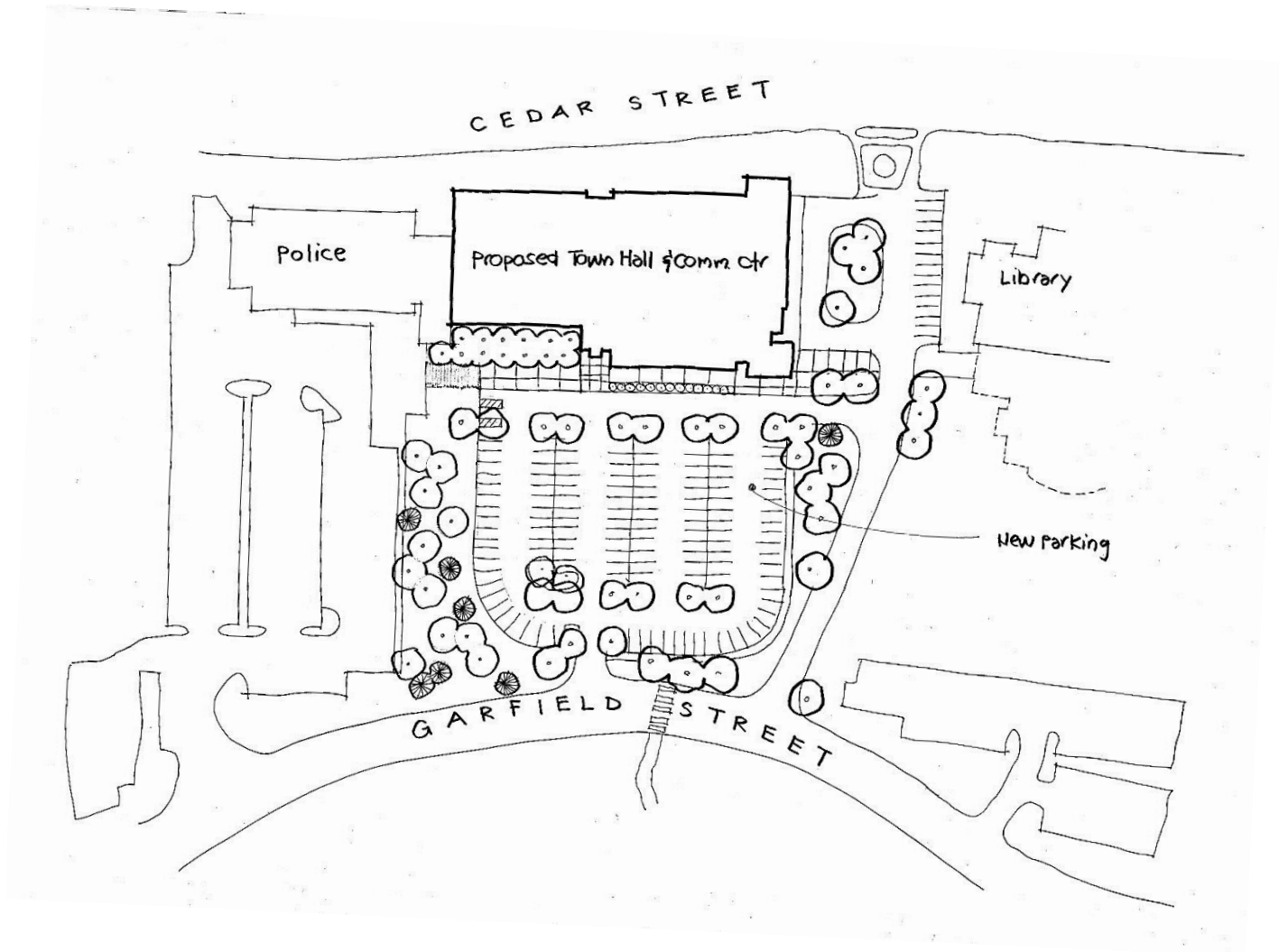
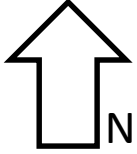




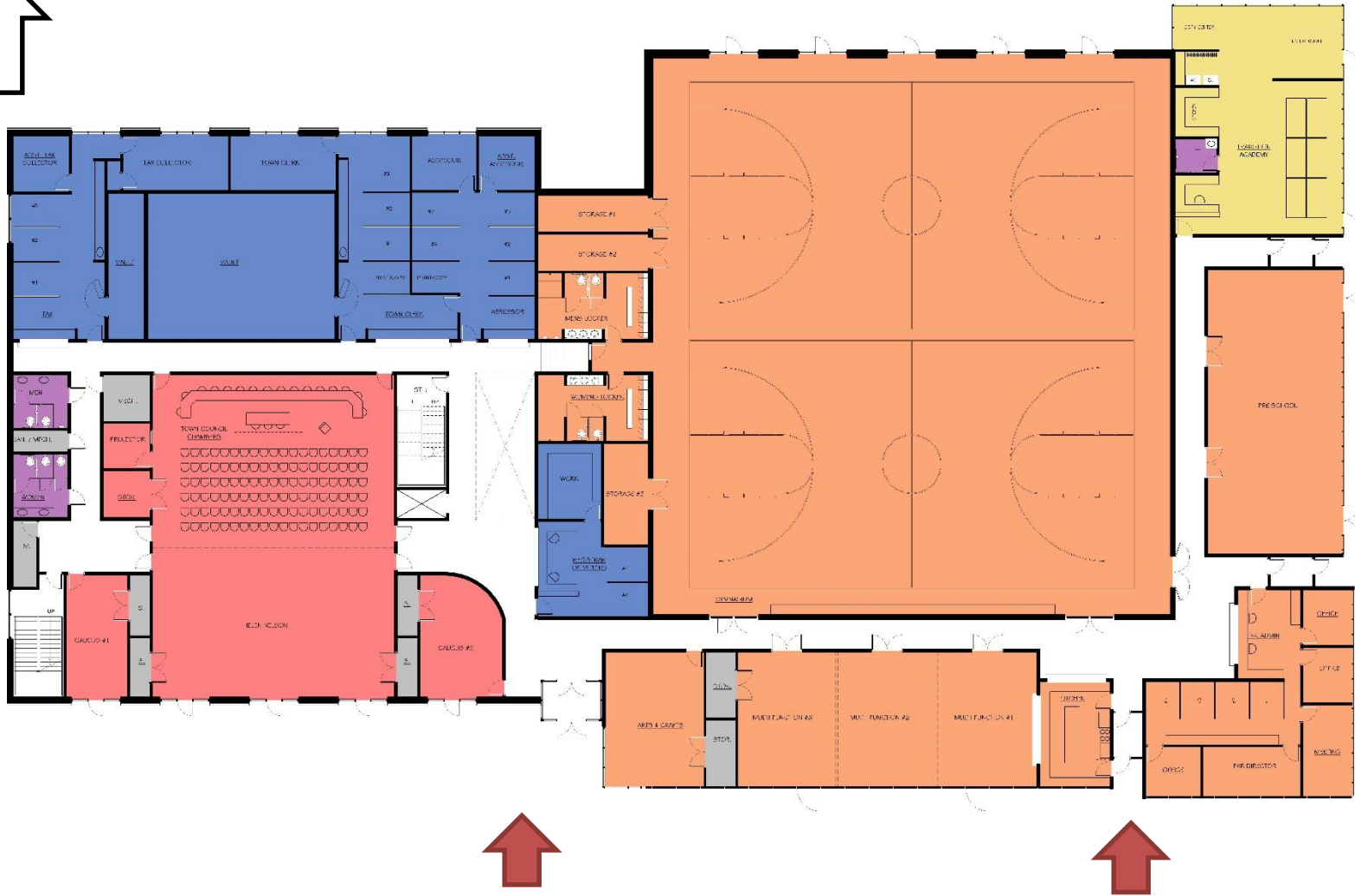
## Town Hall Front & Rear Elevations

Newington Municipal Center | April 5, 2017





Site Plan – East / West



## Community Center Entry

Newington Municipal Center | April 5, 2017

