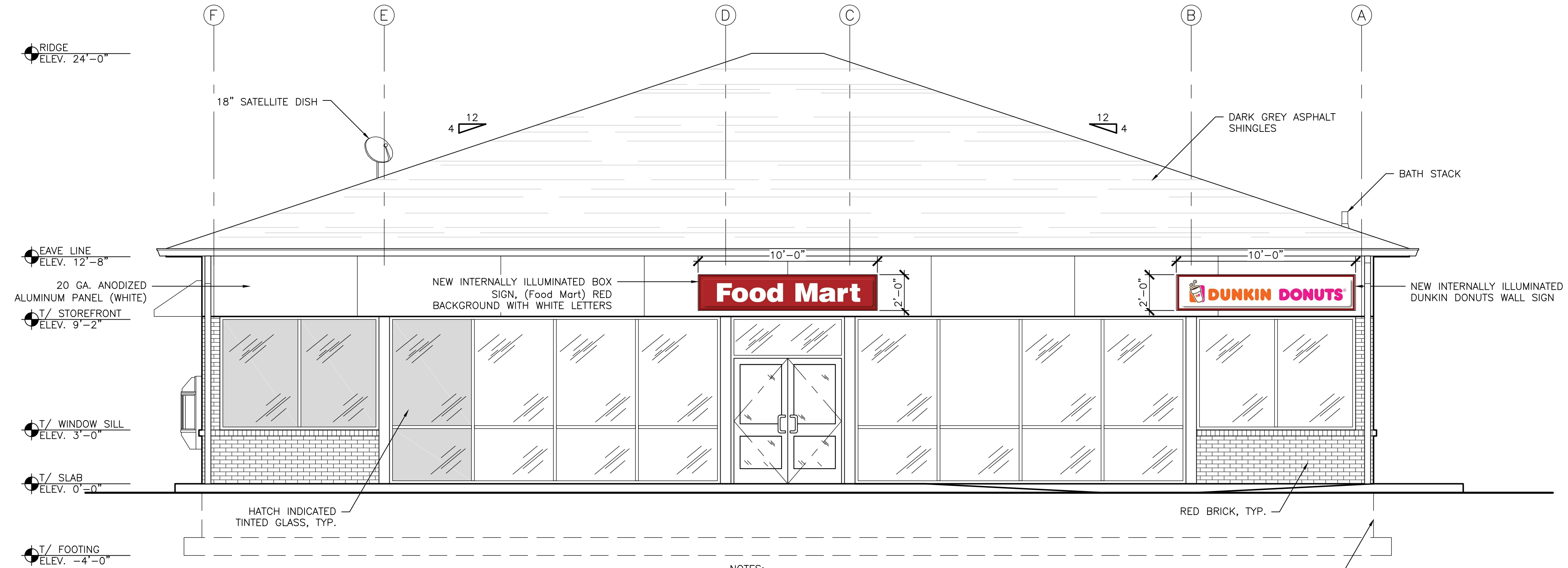
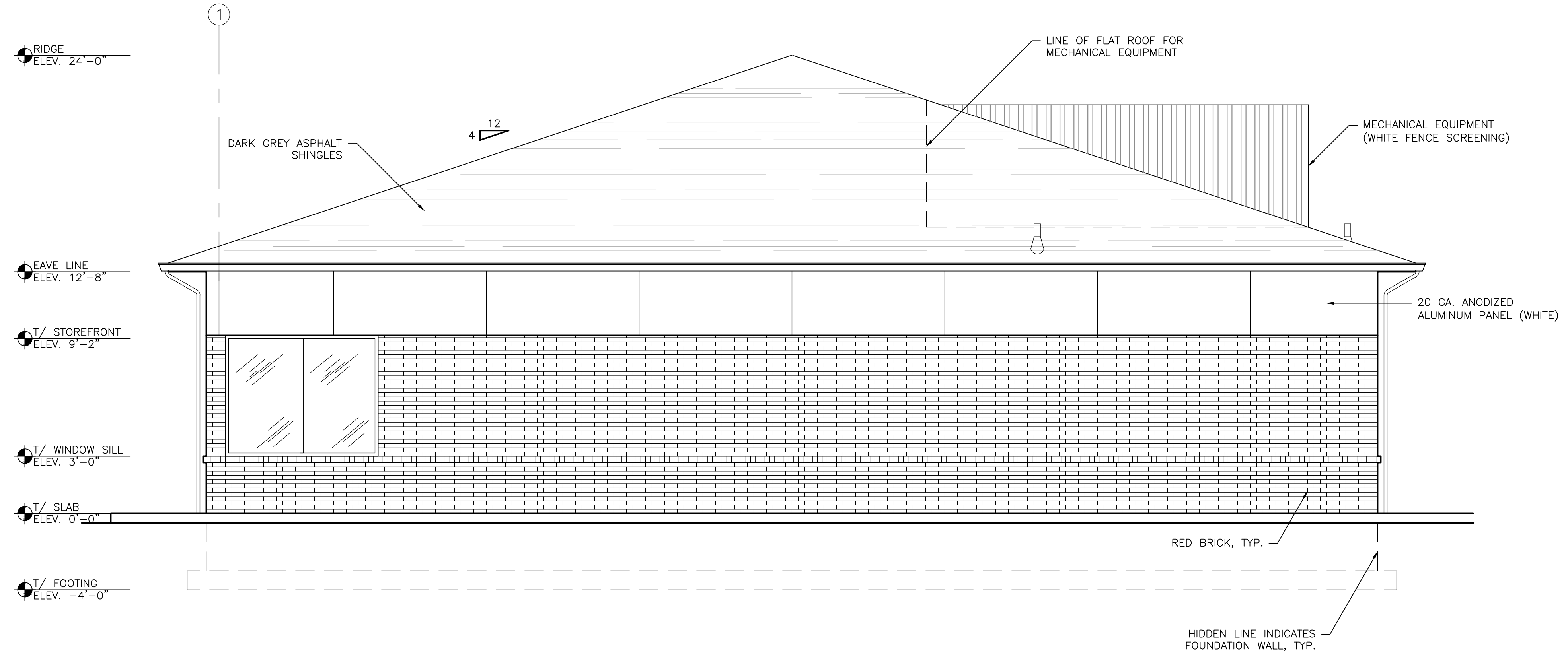


AYOUB ENGINEERING EXPRESSLY DISCLAIMS ANY RESPONSIBILITY FOR MONITORING, INSPECTING, OBSERVING, OR SUPERVISING CONSTRUCTION SERVICES, OR THE MEANS, METHODS, SEQUENCES AND TECHNIQUES OF CONSTRUCTION OR FOR JOB SITE SAFETY AND PROGRAMS FOR THE PROJECT DEFINED BY THE PLANS FOR WHICH THIS CERTIFICATION IS AFFIXED. AYOUB HAS NOT BEEN RETAINED FOR NOR SHALL IT HAVE ANY CONTROL OVER OR BE IN CHARGE OF ACTS OR OMISSIONS OF ANY CONTRACTOR, SUBCONTRACTOR, OTHER AGENTS OR EMPLOYEES OR OF ANY OTHER PERSONS PERFORMING PORTIONS OF THE WORK.



1 FRONT ELEVATION
A2.0 SCALE: 1/4" = 1'-0"

NOTES:
1. 1" INSULATED CLEAR ANODIZED GLASS WITH BLACK ANODIZED ALUMINUM FRAMES & TEMPERED GLASS AS REQUIRED BY CODE.



2 RIGHT ELEVATION
A2.0 SCALE: 1/4" = 1'-0"

REV	PER	DATE	DESCRIPTION
1	AIM	02/06/2017	REVISED PER CLIENT'S COMMENTS
2	AIM	02/16/2017	REVISED PER UPDATED SIGNAGE PACKAGE
3	SMP	03/10/2017	REVISED PER UPDATED CO-BRAND LAYOUT
4	SMP	03/29/2017	UPDATED PER RELOCATED TRASH ENCLOSURE

AYOUB ENGINEERING
ENGINEERS & ARCHITECTS
CORPORATE OFFICE:
414 BENEFIT STREET
PAWTUCKET, RHODE ISLAND 02861
401-728-5533

PREPARED FOR
GIBBS OIL COMPANY

PROJECT ADDRESS
NEWINGTON, CT
128 WILLARD AVENUE

SHEET DESCRIPTION
EXTERIOR ELEVATIONS

PROJECT NO.	3008.116	SHEET NO.	A2.0
SCALE:	AS NOTED		
DRAWN BY:	HAL		
DATE:	02/03/2016		