

TOWN OF NEWINGTON

OPEN SPACE COMMITTEE - Special Meeting

JULY 31, 2019 - 6:30 P.M.

Town Hall - Rm L101

AGENDA

I. ROLL CALL

II. NEW BUSINESS

A. New Plan Of Conservation And Development

Documents:

[MEMO TO OSC RE POCD 31JUL2019.PDF](#)
[OPEN SPACE AND GREENWAYS EXCERPT FROM 2020 POCD.PDF](#)
[COPY OF OS IN OTHER TOWNS POCD.PDF](#)

III. ADJOURN

TOWN OF NEWINGTON

131 Cedar Street Newington, Connecticut 06111

Town Planner

To: Open Space Committee
From: Town Planner Craig Minor, AICP
Date: July 26, 2019
Subject: Next Plan of Conservation and Development

At the June meeting of the Open Space Committee, planning consultant Glenn Chalder spoke with the Committee members about the process of updating Newington's ten-year Plan of Conservation and Development (POCD). He told the Committee that there will be workshop on Thursday, August 29 at the Newington High School to get input from town residents on what they like and don't like about Newington, and their thoughts about the direction that Newington is going in.

Following the August 29 workshop will be a series of what Glenn calls "listening session" on various topics. The purpose of the listening sessions is for the TPZ commissioners to hear directly from town residents, town officials, businesses, and other stakeholders on these topics. One of the listening sessions will be devoted to the environment and open space. Glenn invited members of the Open Space Committee to attend that listening session – and prior to it, to develop information that the Open Space Committee wants to make sure TPZ hears.

Attached are the "Open Space and Greenways" component of the current POCD. Also attached is the spreadsheet that summarizes the Open Space portion of several other towns in Connecticut. This information was assembled by the Open Space Committee in 2018.

cc:
file

Phone: (860) 665-8575 Fax: (860) 665-8577
townplanner@newingtonct.gov
www.newingtonct.gov

Open Space and Greenways

General Goal

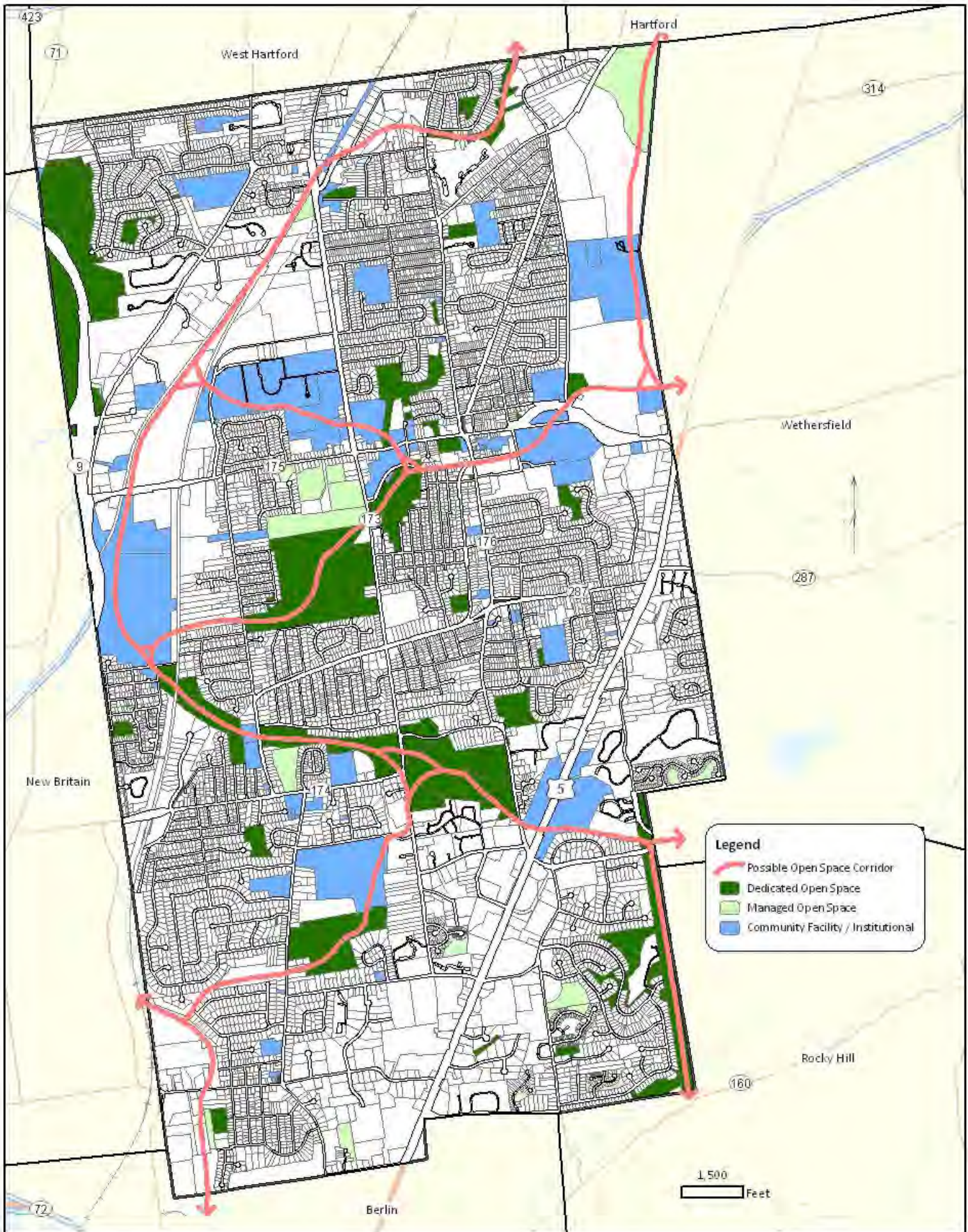
Create a Town-wide open space network that protects environmentally sensitive areas and provides residents with a sense of space and relief from intensive development found in older suburban communities and protect the small town character that is here now.

Strategies:

1. As shown on the map on the facing page, strive to link open space areas together as greenway corridors throughout the community.
2. Use existing public lands, agreements to allow use of institutional lands, and the development review process to develop open space linkages as shown on the Open Space Plan.
3. Seek to re-establish a trail committee to oversee the establishment and maintenance of trails (including maintenance of some portions by residents and/or businesses).
4. Investigate options for raising funds to acquire significant parcels of land for open space and greenway trails for use by future Newington generations.
5. Emphasis should be placed on the preservation of Cedar Mountain as open space with priority directed towards protecting inland wetlands and slopes over 15 percent.
6. Seek to establish a hierarchy of trail treatments as appropriate for different areas and projected usage:
 - a. Paved on-street and off-street trails (major routes).
 - b. Stone dust (secondary routes).
 - c. Dirt (local routes)
7. Support the establishment of a local land trust or other organization to assist in the preservation of open space and the creation of greenway corridors.
8. Consider modifying local regulations to give a lot size exception and coverage bonus for properties that dedicate lot area to the establishment of greenway trails desired by the Town of Newington.
9. Preserve the undeveloped steep slopes along the western Ridgeline of the Cedar Crest Hospital and limit site changes to the footprint of existing building and parking lots.
10. Apply for state and federal open space grants to acquire the western steep slopes of privately owned vacant ridgeline properties along Cedar Mountain.
11. Establish buffer setback standards for the preservation of the natural contours adjacent to the Old Highway greenway corridor.
12. Encourage the Town Council to make annual appropriation to the Land Acquisition Fund, Article V, Section 48-18, Newington Code of Ordinances.

Open Space Plan

Newington, CT



**OPEN SPACE LANGUAGE IN
OTHER TOWN POCD'S**

| <u>Town</u> | <u>Stand-Alone OS Chapter?</u> | <u>List of OS parcels, by owner and/or type?</u> | <u>Specific OS Goals and Objectives?</u> | <u>Objectives and/or Tasks Assigned to Specific Board or Staff Person?</u> | <u>Partner OS Organizations Mentioned by Name?</u> | <u>Other</u> | <u>Link to POCD</u> |
|-------------|--------------------------------|--|---|---|--|---|---|
| Avon | yes | yes | Maintain sufficient OS to preserve community character, provide passive recreational oppts, achieve numerous benefits associated with OS | Avon Land Trust ownership and upkeep of certain parcels and involvement in acquisitions | Avon Land Trust | 21% OS ; the OS Chapter is very comprehensive and contains many strategies | https://www.avonct.gov/planning-community-development/pages/2016-plan-of-conservation-and-development-effective-december-1- |
| Berlin | yes | Yes | Conservation Commission is engaged in the coordination of conservation efforts, supervision of open space lands and monitoring of natural resources. Commission promotes environmental awareness and protection within the Town and supports the coordination of land preservation. | Unsure | | | http://www.town.berlin.ct.us/category/subcategory.php?categoryid=16 |
| Branford | yes | yes | pages 54 - 58 | Town of Branford/Plan- ning & Zoning Commission | Branford Land Trust | Chapter included various definitions of open space. Town map shows Dedicated open space, Managed open space, trailways, etc. but couldn't find acreage or percentage of open space. | http://www.branford-ct.gov/filestorage/143/221/8655/Proposed_POCD_For_PH_110218_BL_-_edited.pdf |
| Brooklyn | no | Davis Property | Maintaining and celebrating the rural and historic character of the town of Brooklyn by protecting it's unique and natural and cultural features. | | Brooklyn Conservation Commission | Implementation matrix but no percentages or identifying amounts of open space. | https://www.brooklynct.org/sites/brooklynct/files/file/file/2579-pocd_final11-11.pdf |
| Cheshire | yes | page 41 | Remain committed to the purchase of open space alone and in partnership with other agencies including the Cheshire Land Trust.. | | Cheshire Land Trust | 22% open space | http://www.cheshirect.org/media/94073/final-plan-7116.pdf |

**OPEN SPACE LANGUAGE IN
OTHER TOWN POCD'S**

| | | | | | | | |
|---------------|--------|---|---|--|---|--|---|
| Cromwell | | list on pages 79, 80 and waterfront area | pages 8, 9, 13 | | | agriculture 10%, open space/park 19.1 % | https://www.cromwellct.com/sites/cromwellct/files/uploads/cromwell_102907.pdf |
| Glastonbury | yes | legend page 85 | page 20 & Provides policies for various types of open space - i.e., parks, streams/greenways and trails | unsure | Great Meadows Conservation Trust | 3,350 of open space acquired through land trusts, etc and town purchases. Also provided 30+ conservation easements | http://www.glastonbury-ct.gov/departments/department-directory-a-k-/community-development-planning-environmental/2017-2027-plan-of-conservation-development-pocd |
| Lisbon | Unsure | Page 7-4 | Four guiding objectices: Preserve community character, Establish an efficient Town Center and municipal campus; Guide residential growth and Encourage economic development. | | | No Open Space | http://www.lisbonct.com/PDF/7%20-%20Conclusion%20and%20Implementation.pdf |
| New Britain | Unsure | ? | ? | | | | |
| Preston | yes | yes; page 17-18 of OS section | The policy's intent is to provide usable open space for the enjoyment of the future residents of the subdivisiion and to aid in the preservation of significant natural or archaeological resources for public education purposes | The Preston Conservation Commission recommended the creation of five corridors or aras that should be protected. | 18 acres donated to Avalonia Land Conservancy (AC) -2004; | 803 acres; 4%Portion of State Forest; Rose Hill Wildlife Management area; Route 2 along Pequot Trail - being acquired; Papalardo Conservation area adjacent to Amos Lake boat launch | http://www.preston-ct.org/DocumentCenter/View/220/Plan-of-Conservation-and-Development-PDF |
| Rocky Hill | | Dinosaur Museum, along CT River, The Great Meadow | Maintain a driven commitment to preserving as mucy open space as possible. | | Kongscut Land Trust, Great Meadows Conservation Trust | 877 acres open space | https://www.rockyhillct.gov/2015_Plan_of_Conservation_and_Development.pdf |
| South Windsor | yes | | yes tied to overall town strategy of sustainability (environ-economic-social) | | Open Space Task Force and Open Space Master Plan | differentiates between dedicated OS, percieved OS and vacant land. References to overdevelopment, loss/prservation of OS mentioned | https://www.southwindsor.org/sites/southwindsorct/files/uploads/pocd_effective_08.18.13.pdf |

**OPEN SPACE LANGUAGE IN
OTHER TOWN POCD'S**

| | | | | | | | |
|---------------|-----|----------------|--|--------------------------|---|--|---|
| West Hartford | yes | yes | encourage support preservation of OS, promote protect restore env resources, stewardship | West Hartford land Trust | West Hartford Land Trust; Wintonbury land trust | 27.7% OS | https://www.westhartfordct.gov/civicax/filebank/blobdload.aspx?BlobID=26592 |
| Wethersfield | | legend page 42 | "Must also devote attention to protecting important resources(such as natural resources, open space, and farms) and providing for community needs. | | Great Meadows Land Trust | 1,817 acres or 22% considered dedicated/managed/other open space | http://wethersfieldct.gov/filestorage/295/297/480/5510/2013_Plan_of_Conservation_%26_Development_Final.pdf |