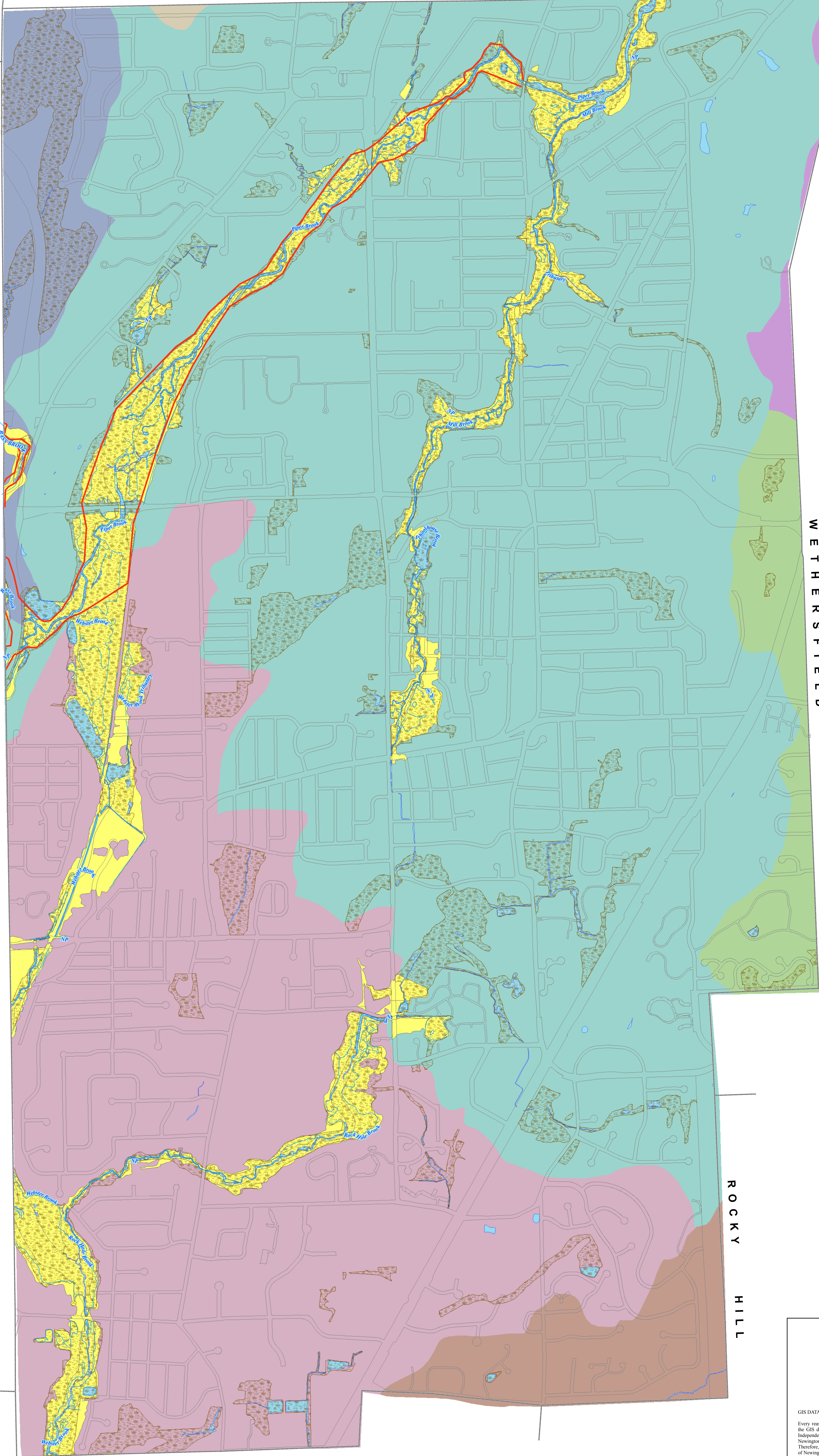


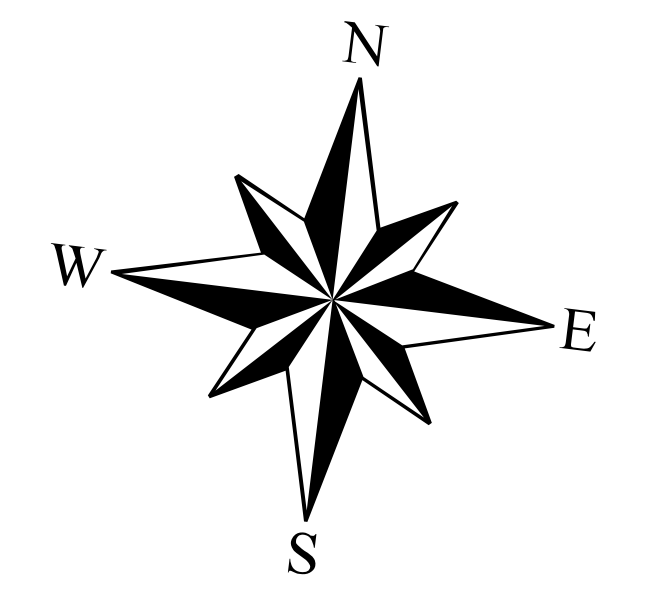
FARMINGTON
NEW
BRITAIN
ROCKY HILL
BERLIN

WEST HARTFORD HARTFORD

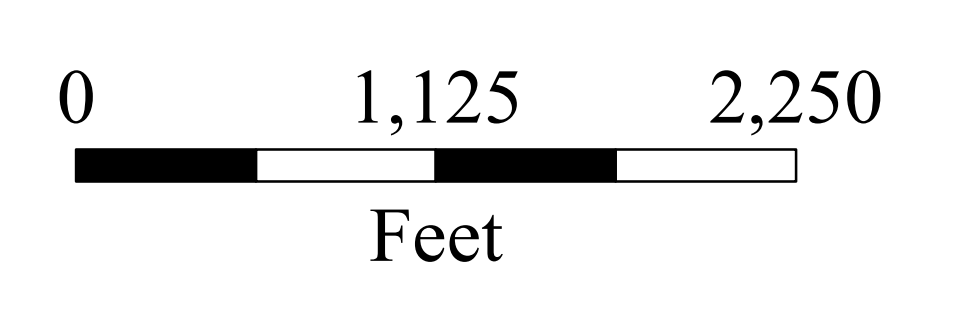


Newington Town Plan of Conservation & Development

Natural Resources



- Legend**
- Town Line
 - Channel Encroachment Line
 - Rivers & Streams
 - In-land Wetlands
 - Lakes & Ponds
 - FEMA 100 Year Flood Hazard Area
 - Drainage Sub-Basins**
 - Bass Brook
 - Goff Brook
 - Mattabeset River
 - Park River
 - Piper Brook
 - Trout Brook
 - Webster Brook



SCALE: 1 inch = 600 feet



Town
of
Newington
Connecticut
2009

Map prepared by
Department of Information Technology
Geographic Information Systems Service
Town of Newington
131 Cedar Street
Newington, CT 06111

GIS DATA IS REPRESENTATIVE DATA ONLY. ALWAYS CONSULT ORIGINAL SOURCE MATERIAL TO ANSWER LEGAL QUESTIONS.
Every reasonable effort has been made to assure the information provided on the GIS map and data is current, accurate, and complete. However, the GIS database and the maps themselves are subject to constant change and the accuracy and completeness cannot be and is not guaranteed. Independent verification of all data contained herein should be obtained. The data presented on this map is not legally binding on the Town of Newington or any of its departments. This map and the associated data are REPRESENTATIONS ONLY and may contain errors in the databases. Therefore, the information presented on this map is for informational purposes only and should not be construed to be legally binding. The Town of Newington shall not be liable for any loss, damages, or claims that arise out of the user's access to, or use of the map, documents, and data provided.